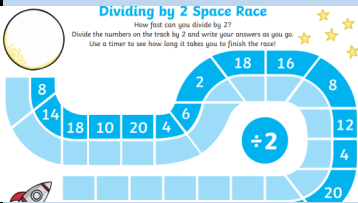


# Monday 1st February 2021

Yr 2 lessons and meetings are on Microsoft Teams. **Highlighted in blue** is a suggestion of when to complete learning which is not led by a class teacher. Please upload learning onto Class Dojo. If you have any questions please message me.



Time / Lesson	Information
<b>8:30—9:00am</b> <b>Phonics / Spelling and Grammar</b>	Group 1 –Phonics Miss Ellie Group 2—Phonics Miss Tremlett Group 3 — Spelling / Grammar Mrs Grant - Dafalla
<b>9:00—9:15</b> <b>Handwriting</b>	<b>Self directed study</b> Choose your own letters and words to practise your writing.
<b>9:30—10:10</b> <b>English</b>	English with Mrs Grant-Dafalla Using adjectives/similes to describe nouns
<b>11:00 — 11:15</b> <b>Maths</b>	Maths 15 minutes fluency with Mrs Grant-Dafalla
<b>11:15—11:40</b> 	<b>Maths video</b> <b>Halving</b> <a href="#">No link just worksheet</a> 25minutes self directed learning
<b>12:00—1:00</b>	<b>Lunch</b>
<b>1:00—1:30</b> Guided Reading— <b>Pink group</b>	Guided Reading Mrs Grant– Dafalla
<b>1:30—2:00</b> Guided Reading— <b>Red group</b>	Guided Reading Mrs Grant– Dafalla
<b>1:00—2:00</b> Use this time (where possible) throughout the week to complete other work .	<b>self directed study</b> <b>History, Science, Online Apps, Reading Comprehension, Maths/ English work packs</b>

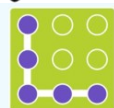
## Self Directed Study

This timetable for self directed study is a guide. If it works for you fantastic! If not find a suitable time to complete the self directed study. Do not forget to upload your work.

Letter-join

Class Name: Year 2

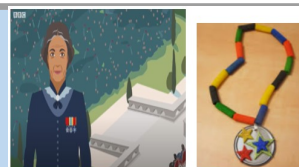
wk5013



Username: gglv\_2

Password: letterjoin

## History



Watch **video 3** and write 5 interesting facts about Mary Seacole.

<https://www.youtube.com/watch?v=4QgfNX79eLE>

## Science Lesson 2—Habitats

Watch the lesson and complete the worksheet1 and 2 : 1)draw a habitat 2)write the correct animals in the habitat.

<https://classroom.thenational.academy/lessons/what-is-a-habitat-cmupat>

## Phonics/Spelling and Grammar

**Group 1** – a-e (as in **make, cake**)

**Group 2**—ey as in (they)

**Group 3** - /s/ sound spelt with c

Spelling words— city, cycle, race, celery, circle, pencil, December, once, fancy , ice



**Story time**  
2:10pm

## Games with Friends

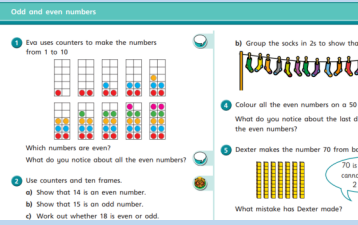
10:40 —10:55

(Invitation will be sent)

# Tuesday 2nd February 2021

Yr 2 lessons and meetings are on Microsoft Teams. **Highlighted in blue** is a suggestion of when to complete learning which is not led by a class teacher. Please upload learning onto Class Dojo. If you have any questions please message me.



Time / Lesson	Information
<b>8:30—9:00am</b> <b>Phonics / Spelling and grammar</b>	Group 1 –Phonics Miss Ellie Group 2—Phonics Miss Tremlett Group 3 — Spelling / Grammar Mrs Grant - Dafalla
<b>9:00—9:15</b> <b>Handwriting</b>	<b>Self directed study</b> Choose your own letters and words to practise your writing.
<b>9:30—10:10</b> <b>English</b>	English with Mrs Grant-Dafalla Using adjectives/similes to write sentences.
<b>11:00 — 11:40</b> <b>Maths</b>	Maths 15 minutes fluency with Mrs Grant-Dafalla
	<b>Maths video</b> Odd and Even numbers <a href="https://vimeo.com/498261586">https://vimeo.com/498261586</a> 25minutes self directed learning
<b>12:00—1:00</b>	<b>Lunch</b>
<b>1:05—1:30</b> PE with Mr Hanratty	In Mr Hanratty's absence type - <b>Just Dance Kids</b> or <b>Joe Wicks</b> into You Tube for 30 minutes of exercise
<b>1:30—2:00</b> Guided Reading <b>Yellow/ blue</b>	Guided Reading Mrs Grant – Dafalla
<b>1:30—2:00</b> Use this time (where possible) throughout the week to complete other work .	<b>self directed study</b> <b>History, Science, Online Apps, Reading Comprehension, Maths/ English work packs</b>

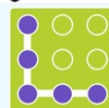
## Self Directed Study

This timetable for self directed study is a guide. If it works for you fantastic! If not find a suitable time to complete the self directed study. Do not forget to upload your work.

Letter-join

Class Name: Year 2

wk5013



Username: gglv\_2

Password: letterjoin

## Phonics/Spelling and Grammar

**Group 1** – i-e (as in **nice smile**)

**Group 2**— alternative pronunciations  
i o c g u

**Group 3** - /s/ sound spelt with c

Spelling words— city, cycle, race, celery, circle, pencil, December, once, fancy , ice

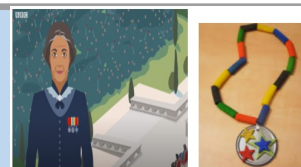
## History

Watch **video 3**

and write 5

interesting facts about Mary Seacole.

<https://www.youtube.com/watch?v=4QgfNX79eLE>



## Science Lesson 2—Habitats

Watch the lesson and complete the worksheet1 and 2 : 1)draw a habitat  
2)write the correct animals in the habitat.

<https://classroom.thenational.academy/>



**Story time**  
2:10pm

## Games with Friends

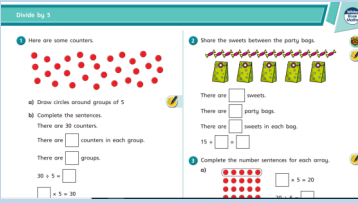
10:40 —10:55

(Invitation will be sent)

# Wednesday 3rd February 2021

Yr 2 lessons and meetings are on Microsoft Teams. **Highlighted in blue** is a suggestion of when to complete learning which is not led by a class teacher. Please upload learning onto Class Dojo. If you have any questions please message me.



Time / Lesson	Information
<b>8:30—9:00am</b> <b>Phonics / Spelling and grammar</b>	Group 1 –Phonics Miss Ellie Group 2—Phonics Miss Tremlett Group 3 — Spelling / Grammar Mrs Grant - Dafalla
<b>9:00—9:15</b> <b>Handwriting</b>	<b>Self directed study</b> Choose your own letters and words to practise your writing.
<b>9:30—10:10</b> <b>English</b>	English with Mrs Grant-Dafalla Using adjectives/similes to describe nouns
<b>11:00 — 11:40</b> <b>Maths</b>	Maths 15 minutes fluency with Mrs Grant-Dafalla
	<b>Maths video</b> Divide by 5 <a href="https://vimeo.com/498262138">https://vimeo.com/498262138</a> 25minutes self directed learning
<b>12:00—1:00</b>	<b>Lunch</b>
<b>1:05—1:30</b> PE with Mr Hanratty	In Mr Hanratty's absence type - <b>Just Dance Kids</b> or <b>Joe Wicks</b> into You Tube for 30 minutes of exercise
<b>1:30—2:00</b> Guided Reading <b>green/ orange</b>	Guided Reading Mrs Grant – Dafalla
<b>1:30—2:00</b> Use this time (where possible) throughout the week to complete other work .	<b>self directed study</b> <b>History, Science, Online Apps, Reading Comprehension, Maths/ English work packs</b>

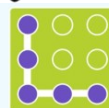
## Self Directed Study

This timetable for self directed study is a guide. If it works for you fantastic! If not find a suitable time to complete the self directed study. Do not forget to upload your work.

Letter-join

Class Name: Year 2

wk5013



Username: gglv\_2

Password: letterjoin

## Phonics/Spelling and Grammar

**Group 1** – o-e (as in **bone**, **phone**)

**Group 2**— alternative pronunciations  
i o c g u

**Group 3** - /s/ sound spelt with c

Spelling words— city, cycle, race, celery, circle, pencil, December, once, fancy , ice

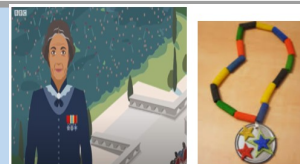
## History

Watch **video 3**

and write 5

interesting facts about Mary Seacole.

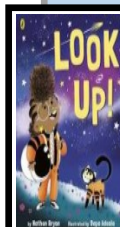
<https://www.youtube.com/watch?v=4QgfNX79eLE>



## Science Lesson 2—Habitats

Watch the lesson and complete the worksheet1 and 2 : 1)draw a habitat  
2)write the correct animals in the habitat.

<https://classroom.thenational.academy/lessons/what-is-a-habitat-cmupat>



**Story time**  
2:10pm

## Games with Friends

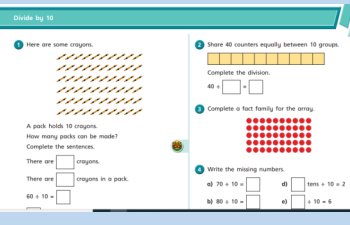
10:40 —10:55

(Invitation will be sent)

# Thursday 4th February 2021

Yr 2 lessons and meetings are on Microsoft Teams. **Highlighted in blue** is a suggestion of when to complete learning which is not led by a class teacher. Please upload learning onto Class Dojo. If you have any questions please message me.



Time / Lesson	Information
<b>8:30—9:00am</b> <b>Phonics / Spelling and Grammar</b>	Group 1 –Phonics Miss Ellie Group 2—Phonics Miss Tremlett Group 3 — Spelling / Grammar Mrs Grant - Dafalla
<b>9:00—9:15</b> <b>Handwriting</b>	<b>Self directed study</b> Choose your own letters and words to practise your writing.
<b>9:30—10:10</b> <b>English</b>	English with Mrs Grant-Dafalla Using adjectives/similes to write sentences.
<b>11:00 — 11:15</b> <b>Maths</b>	Maths 15 minutes fluency with Mrs Grant-Dafalla
<b>11:15—11:40</b> 	<b>Maths video</b> Divide by 10 <a href="https://vimeo.com/498262386">https://vimeo.com/498262386</a>  25minutes self directed learning
<b>12:00—1:00</b>	<b>Lunch</b>
<b>1:00—1:30</b> Guided Reading <b>Turquoise/ Purple</b>	Guided Reading Mrs Grant– Dafalla
<b>1:30—2:00</b> Guided Reading <b>Gold/Lime/ White</b>	Guided Reading Mrs Grant– Dafalla
<b>1:00—2:00</b> Use this time (where possible) throughout the week to complete other work .	<b>self directed study</b> <b>History, Science, Online Apps, Reading Comprehension, Maths/ English work packs</b>

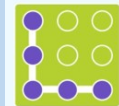
## Self Directed Study

This timetable for self directed study is a guide. If it works for you fantastic! If not find a suitable time to complete the self directed study. Do not forget to upload your work.

Letter-join

Class Name: Year 2

wk5013

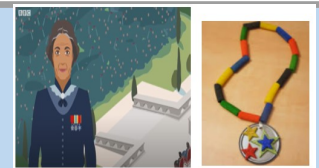


Username: gglv\_2  
Password: letterjoin

## History

Watch **video 3**

and write 5



interesting facts about Mary Seacole.


<https://www.youtube.com/watch?v=4QgfNX79eLE>

## Science Lesson 2—Habitats

Watch the lesson and complete the worksheet1 and 2 : 1)draw a habitat  
2)write the correct animals in the habitat.

<https://classroom.thenational.academy/lessons/what-is-a-habitat-cmupat>

## Phonics/Spelling and Grammar

**Group 1 – u-e** (as in huge) 

**Group 2—** alternative pronunciations

i o c g u

**Group 3 - /s/** sound spelt with c

Spelling words— city, cycle, race, celery, circle, pencil, December, once, fancy , ice



**Story time**  
2:10pm

**Games with Friends**

10:40 —10:55

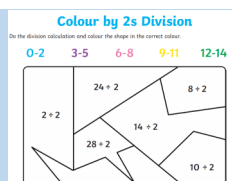
(Invitation will be sent)

# Friday 5th February 2021

Yr 2 lessons and meetings are on Microsoft Teams. **Highlighted in blue** is a suggestion of when to complete learning which is not led by a class teacher. Please upload learning onto Class Dojo. If you have any questions please message me.



Time / Lesson	Information
<b>8:30—9:00am</b> <b>Phonics / Spelling and Grammar</b>	Group 1 –Phonics Miss Ellie Group 2—Phonics Miss Tremlett Group 3 — Spelling / Grammar Ms Bibby / Miss Evans
<b>1:00—1:30</b> Guided Reading <b>Turquoise/ Purple</b>	Guided Reading Ms Bibby Group 1 TBC
<b>1:30—2:00</b> Guided Reading <b>Turquoise/ Purple</b>	Guided Reading Ms Bibby Group 2 TBC
<b>10:15—10:30</b> <b>Assembly</b>	<a href="https://zoom.us/j/91600582259?pwd=NDlXZVF4Y2JnQj1BvR0xhQmM0SmJldz09">https://zoom.us/j/91600582259?pwd=NDlXZVF4Y2JnQj1BvR0xhQmM0SmJldz09</a> Meeting ID: 916 0058 2259 Passcode: nHLz01
<b>11:00 — 11:15</b> <b>Maths</b>	Maths 15 minutes fluency



Division by 5 and 10

**No link just worksheet**

## Self Directed Study

This timetable for self directed study is a guide. If it works for you fantastic! If not find a suitable time to complete the self directed study. Do not forget to upload your work.



wk5013

**Class Name: Year 2**

**Username: gglv\_2**

**Password: letterjoin**

## Phonics/Spelling and Grammar

**Group 1** – Revision of all sounds taught this week.

**Group 2**— alternative pronunciations  
i o c g u

**Group 3** - alternative spellings with Miss Evans/ Ms Bibby



# Switch off Fridays!

See how many challenges you can complete!

